

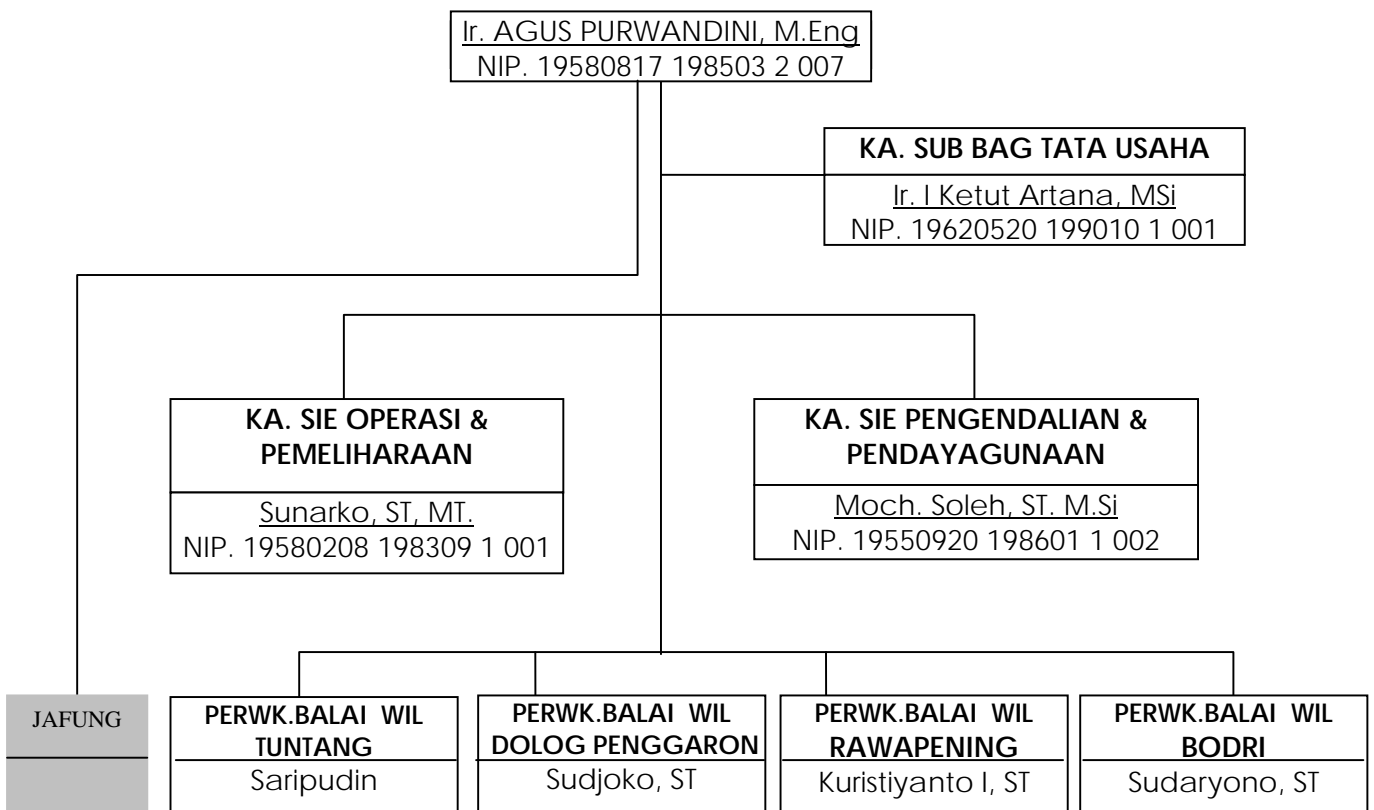
Member's Annual Report 2009

1. About the organization

Name of the organization and postal address of the office
"Jragung Tuntang Basin water Resources Management Unit"
Jl. Madukoro Blok AA-BB No. 1c Semarang, Indonesia

2. The representative of the organization

ORGANIZATION STRUCTURE OF JRAGUNG TUNTANG BASIN WATER RESOURCES MANAGEMENT UNIT



3. Purposes and roles of your organization

a. Historical background of the organization

Increase of growth people, Increase of humanism and trouble of food powerself program caused need of water increase in future time. Happening of importance conflict among every water users

asked that must be felt according to the time, room, total and quality.

For celebrating the role of good water, water resources management has to be done institutionally until to the level of river basin. Water resources basin is national potential that must be developed and to be managed wisely so that can be used for happiness people more and more, for both of importance now generation and next generation. Water can cause the conflict among the user so can be national disintegration potential. Therefore, water resources basin has strategic role in sustainable national development so that maintenance activity and water resources basin expected to be the national commitment activity.

Jragung Tuntang Basin Water Resources Unit is one of the unit of basin water resources in river area that to be made based on the need and to anticipate the problem that happen possible.

b. Purposes and roles of the organization

Proposes of the building of Jragung Tuntang Basin Water Resources Unit is as technical activity unit of Dinas PSDA central java province to celebrate Basin Water Resources Management so that there is one work unity and clarify of joint role and coordination between every instancy that manage basin water resources management in work area of Basin Water Resources Management.

Objectives of the building of Jragung Tuntang Basin Water Resources Management is to celebrate basin water resources management that thought, integrated, accountable and sustainable in river area system, so there is clarify about position, job, function and responsibility coordination and work relation of between every instancy related.

4. Outline of the organization

a. Number of staff

"Jragung Tuntang Basin water Resources Management Unit" in doing its function supported by staff totally 149 persons (condition per may 31 st 2010)

b. Amount of the annual budget in 2009

Province Government	: Rp. 5.447.989.000,-
Central Government	: Rp. 7.974.655.000,-
TOTAL	: Rp. 11.422.644.000,-

c. Organizational chart



d. Ongoing Projects

- *Development Program & Management Irrigation network, Swamp and other water network.*
 - ✓ *Identification Irrigation and Infrastructure.*

- ✓ *Infrastructure Water resources Operasionalisation .*
- ✓ *Care and maintenance infrastuture irrigation.*
- ✓ *Increase participation of society in irrigation developing and Management.*
- *Supply and Raw Water Management Program.*
 - ✓ *Identification of Raw water infrastructure .*
 - ✓ *Care and Maintenance raw water infrastructure .*
 - ✓ *Society participation increasing in developing and management water raw.*
- *Conservation and Management program of River, Swamp, and other water resources .*
 - ✓ *Identification conservation infrastructure.*
 - ✓ *Monitoring pollution and water quality laboratory analysis.*
 - ✓ *Socialisation asset protection of province region recommendation technic preparation water surface, group minerals c and irrigated land.*
 - ✓ *Care and Maintenance conservation infrastructure of water resources .*
 - ✓ *Increased community participation in development and conservation management.*
 - ✓ *Management of hydrological data, databases and Water resources information system .*
- *Flood Control Program & Coastal protection .*
 - ✓ *Identification of flood control infrastructure.*
 - ✓ *Care and maintenance of the flood control infrastructure and coastal protection .*

e. Main Events in 2009

1. *Flooding on January 12th, 2009 at Jragung River :*
 - *left canal Cabean river in DukuhWangun, Rejosari Village, Karangawen districk , Demak Regency there are 2 (two) locations of the long break \pm 40 m with a depth of 8 m.*
 - Left canal Cabean river in the middle Dukuh Cabean, Sidorejo Village, Karangawen districk, Demak_Regency have one location of \pm 6 m long break.*
 - *left canal Cabean river in Dukuh Singopadu, Sidorejo Village, Karangawen districk, Demak_Regency, there is 1 (one) location of the long break \pm 8 m which resulted in pairs along the \pm 10 m Parapat collapsed elsewhere decline left the inside of the dike along \pm 100 m, depth 1 -1.5 m with a width of 2 m.*
2. *Flood on February 8, 2009:*
 - There has been a high-intensity heavy rains on 7-8 February 2009*

near the city of Semarang and Kendal regency caused flooding in the area of Balai PSDA Jragung Tuntang, quantity of rainfall was recorded in several rainfall stations as follows:

Semarang City:

- Station Pucang Gading = 150 mm
- Station Genuk = 88.5 mm
- Station Banyumeneng = 60 mm
- Station BMG Siliwangi = 251mm

Kendal Regency:

- Station Surokonto (6.a) = 342 mm
- Station Pageruyung (6) = 347 mm
- Station Sukorejo = 96 mm
- Station Kebumen Sukorejo = 120 mm
- Station Bd.Kedung Pengilon = 280 mm
- Station Brangsong = 207 mm

Due to flooding, inundation and runoff occur in some rivers in the region Balai PSDA Jragung Tuntang :

- Inundation at Ahmad Yani airport runways along the 500 m with a height of 0.15 m pool, so that the suspension of flight activity.
- Flood inundation also occurred around the West Canal that caused the housing_stagnance Castle Pearl, Horizon area and office complex on the road Madukoro.
- Run off in some point of the dike right / left of the east flood canal resulting in a puddle on the 5th District in the city of Semarang.
- overflow some river dikes in the region Kendal regency (Blorong river, Kendal river, Waridin river). Bringin and Plumbon river residing in the city of Semarang resulted in a puddle on settlements, roads across the Province, the railroad and the area of paddy fields.

3. Flood events on June 10th, 2009 :

At 09.00 pm the water runoff occured on the right and left embankments of East Flood Canal, with the following details:

> Canal left:

Runoff occured in several points along the 500 m, which resulted in puddles along the road starting from the downstream bridge Barito arterial road to Soekarno Hatta highway Kaligawe covering Bugangan Village to Village Mlatiharjo.

Officers and their communities could not perform emergency treatment because of the dike is very solid left-BKT illegal settlements. High street puddles around the Barito is as deep as 70 cm for 8 hours.

> canal right:

Runoff occurred in several points ranging from village to village Sambirejo Kaligawe. Substantial runoff occurred in Sub Sambirejo, resulted in the dike right eroded East Flood Canal 4 m long with a depth of 1.5 m.

The runoff was also founded at the right times Babon river downstream of the highway located in Semarang - Demak Village Trimulyo, runoff was flowing in the area of aquaculture.

For emergency treatment *Jragung Tuntang Basin water Resources Management Unit* been sent sacks of flood as many as 1000 sheets to cope with runoff that occurred in the Village and Village Kaligawe Sawah Besar.

In these flood events, water surface elevation of the Pucang Gading Dam 1.8 m (90 m / sec) and the East Canal Flood gate open at 6 x 1.5 m ($Q = 145 \text{ m}^3/\text{sec}$).

The flood predicted occurred caused by the high flood discharge in three tributaries namely East Flood Canal . Bajak River. Candi River and Kedung Mundu river, remind East Flood Canal maximum capacity ($Q_{\text{max}} = 210 \text{ m}^3 / \text{sec}$)